

412 Louise Ave

**Charlotte, NC
28204**

OFFICE BUILDING FOR LEASE



\$32 PSF For Lease

ABOUT PROPERTY

- Located in the Elizabeth neighborhood in a highly walkable area east of Uptown.
- A mix of medical centers, local restaurants, and historic homes, nearby.
- Proximity to Central Avenue in Plaza Midwood.

PROPERTY DETAILS

- 3,661 SF For Lease at \$32 PSF Modified Gross.
- Parking on street and behind building.
- Comfortable interior layout with nice finishes.

**412 Louise Ave
Charlotte, NC 28204**



PROPERTY CONTACTS:

John Stipp

**John@CharlotteOfficeSpace.com
704-540-1260**

Jackson Stipp

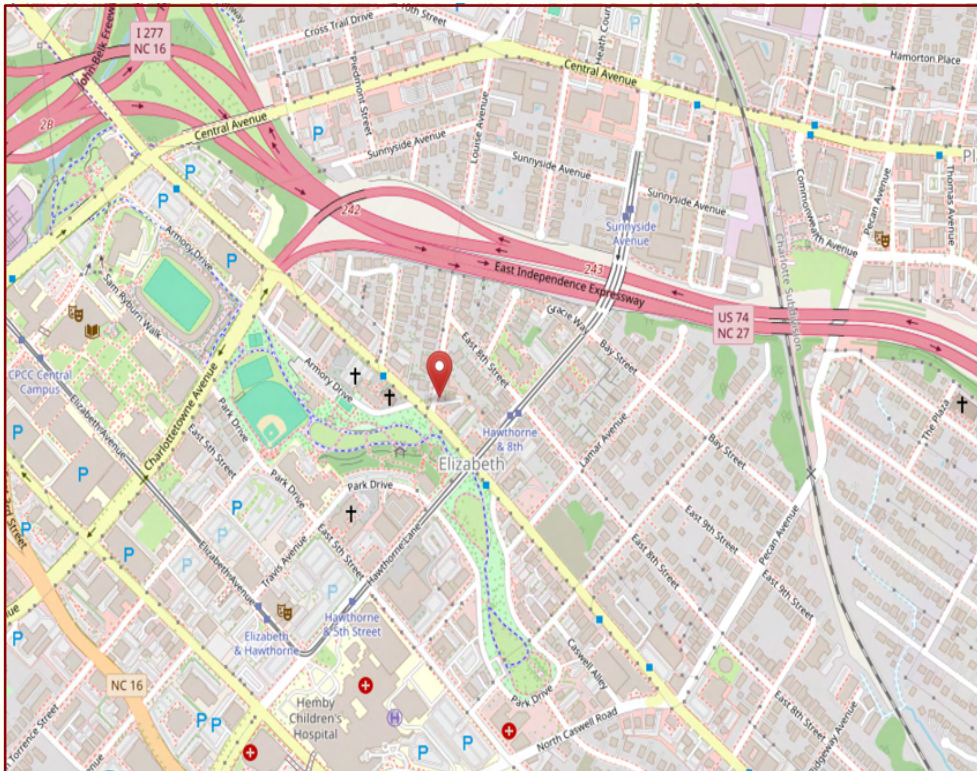
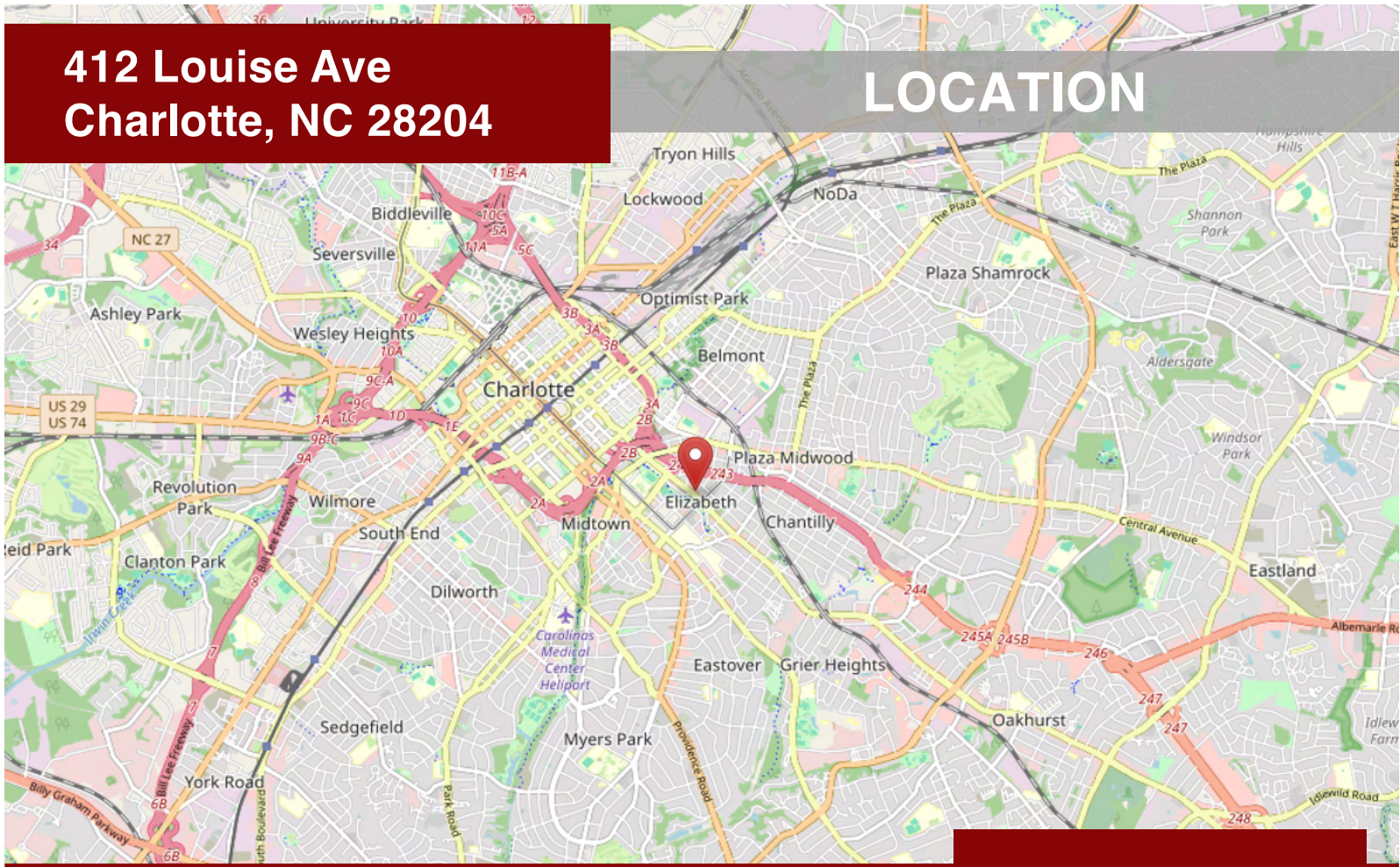
**Jackson@CharlotteOfficeSpace.com
704-907-5074**

CHARLOTTEOFFICESPACE.COM
8508-124 Park Rd, Charlotte, NC 28210

The information contained herein has been obtained from sources deemed reliable, but we make no guarantees, warranties, or representations as to the completeness or accuracy thereof.

**412 Louise Ave
Charlotte, NC 28204**

LOCATION



Located east of
Uptown city center.



YEAR BUILT
1957



**Exceptional
Walkability**



AVAILABLE SF
3661

© OpenStreetMap contributors

412 Louise Ave
Charlotte, NC 28204

INTERIOR PHOTOS

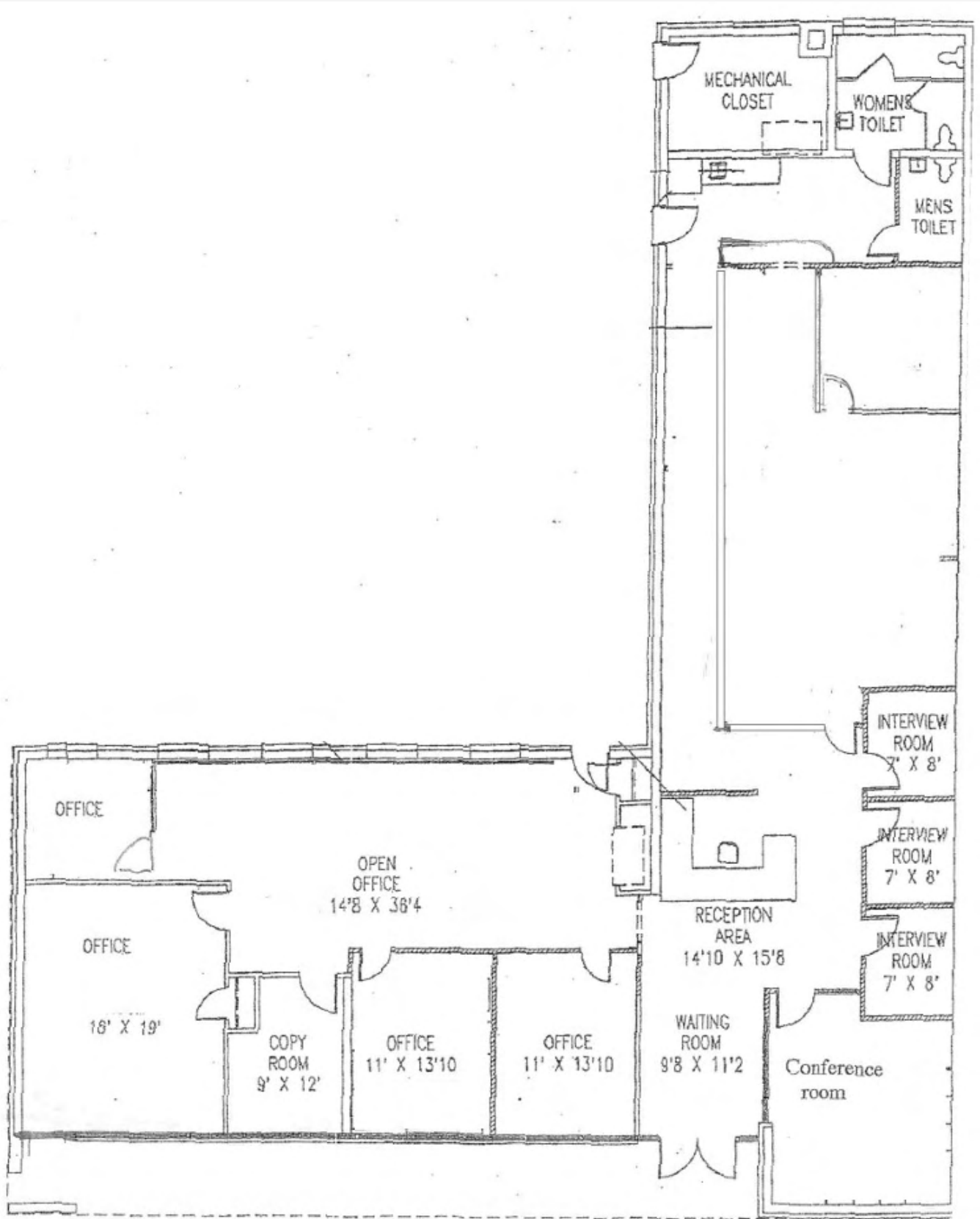


OFFICE PROPERTIES

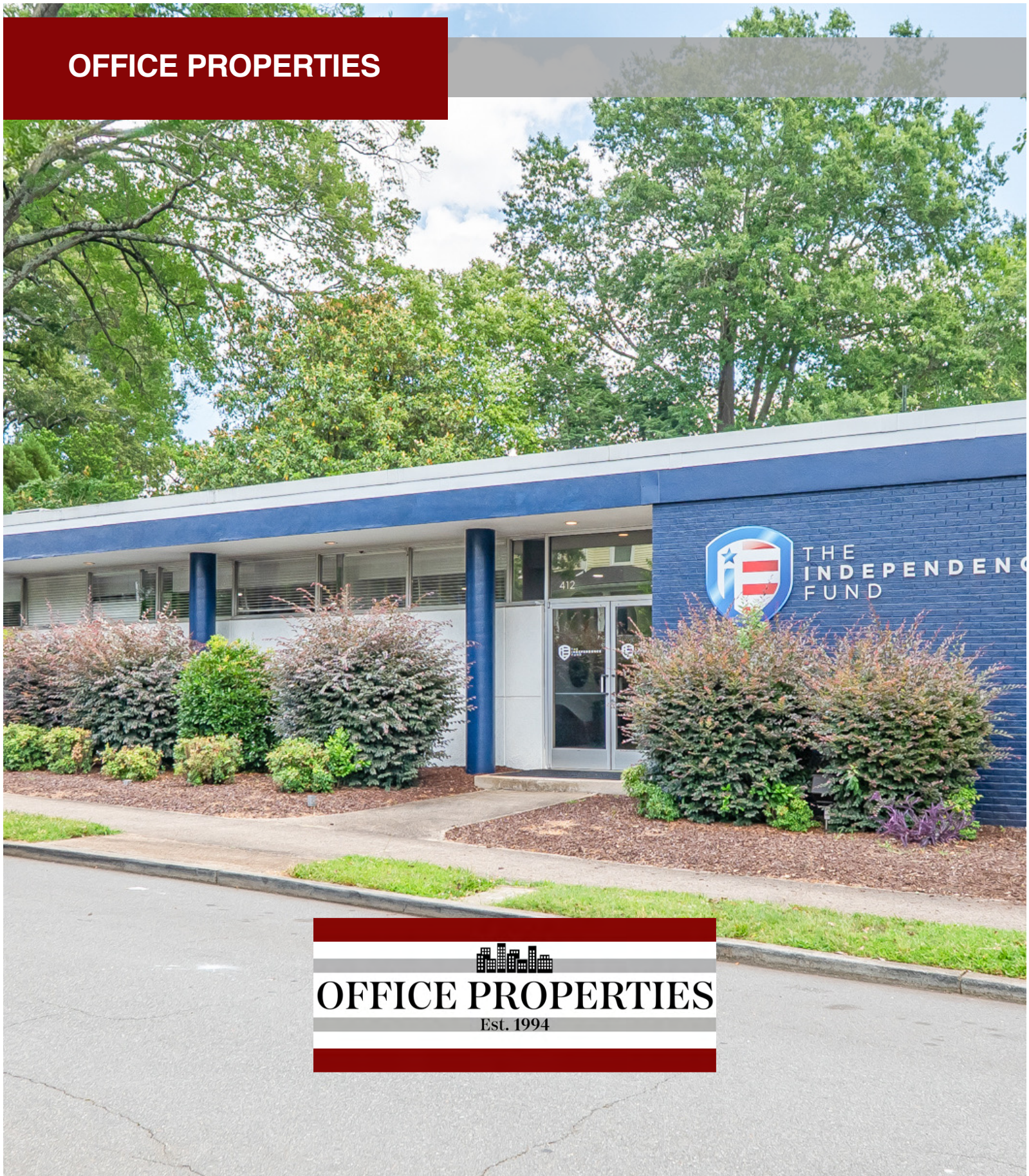
Est. 1994

412 Louise Ave,
Charlotte, NC 28204

FLOOR PLAN



OFFICE PROPERTIES



OFFICE PROPERTIES
Est. 1994

For More Information:

John Stipp
John@CharlotteOfficeSpace.com
704-540-1260

Jackson Stipp
Jackson@CharlotteOfficeSpace.com
704-907-5074