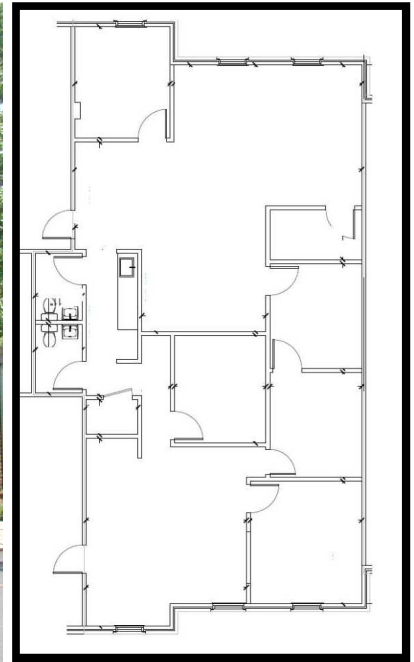




OFFICE PROPERTIES

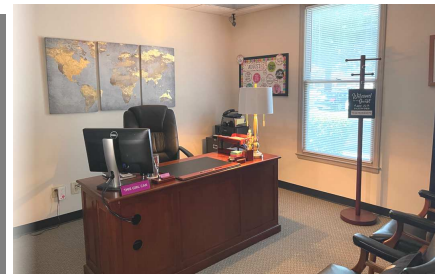


Office Space for Lease



4523 Park Road , Unit A 102

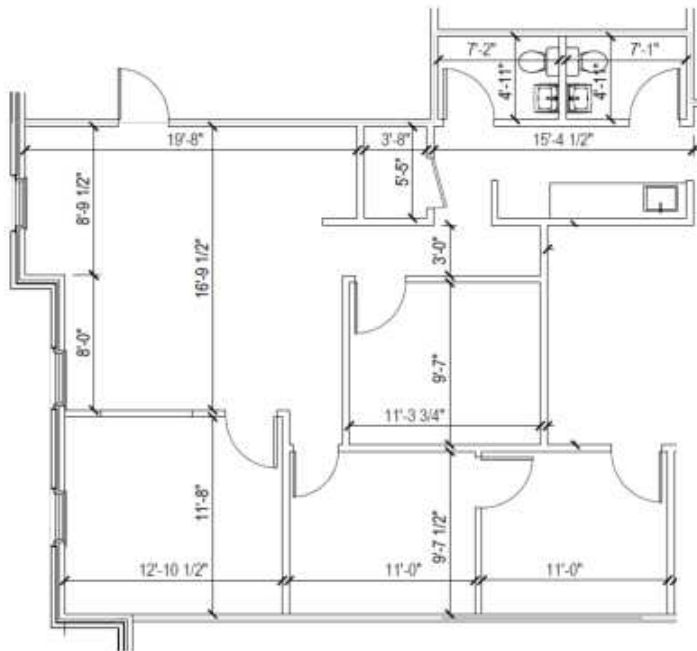
- Conveniently located near Park Road shopping center at Montford Drive.
- 1,180-1,881 rentable sq. ft. (part or all) on the ground floor.
- Entire space has reception/open area, conference room/ executive office, 4 additional private offices, galley kitchen, two restrooms, open work area, two storage closets.
- \$28.00 per sq. ft. net of utilities and janitorial service.
- Approximately 9 marked parking spaces (5 for just the partial space).
- Well appointed - attractive space.
- See larger dimensioned layouts second page.



Data presented on this flyer is secured from reliable sources and while every effort is made to obtain accuracy, it is not guaranteed as errors and omissions may occur.

Half of the space: 1,180 rentable square feet

Suite 102



All of the space: 1,881 rentable square feet

Suite 102

