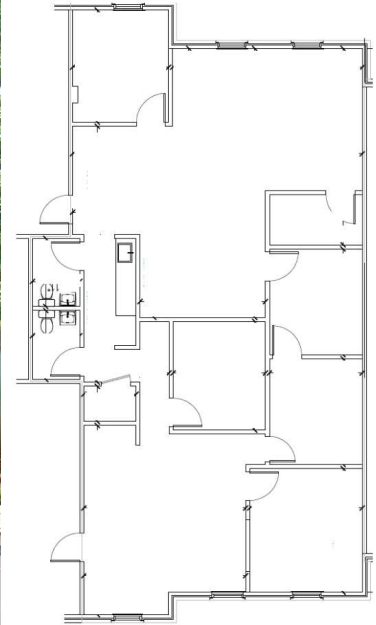




OFFICE PROPERTIES

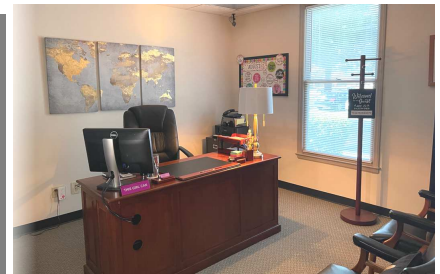


Office Space for Lease



4523 Park Road , Unit A 102

- Conveniently located near Park Road shopping center at Montford Drive.
- 1,881 Rentable sq. ft. on the ground floor.
- Reception, conference room/executive office, 4 additional private offices, cubicle open area, galley kitchen, two restrooms.
- \$28.00 per sq. ft. net of utilities and janitorial service.
- Nine marked parking spaces.
- Well appointed - attractive space.
- See larger dimensioned layout second page.



Data presented on this flyer is secured from reliable sources and while every effort is made to obtain accuracy, it is not guaranteed as errors and omissions may occur.

