



OFFICE PROPERTIES



www.CharlotteOfficeSpace.com

Office Condo for Lease



6408 A + B Bannington Road

- Located in Bannington Office Park of Highway 51 near Carmel Road.
- 4,000 rentable square feet.
- Parking on site!
- \$23.00 per sq. ft. plus electricity and janitorial.
- Reception, large conference room, large bullpen, 8-9 offices, kitchen and break area. Front and Side Entrances. SEE LAY-OUT NEXT PAGE.

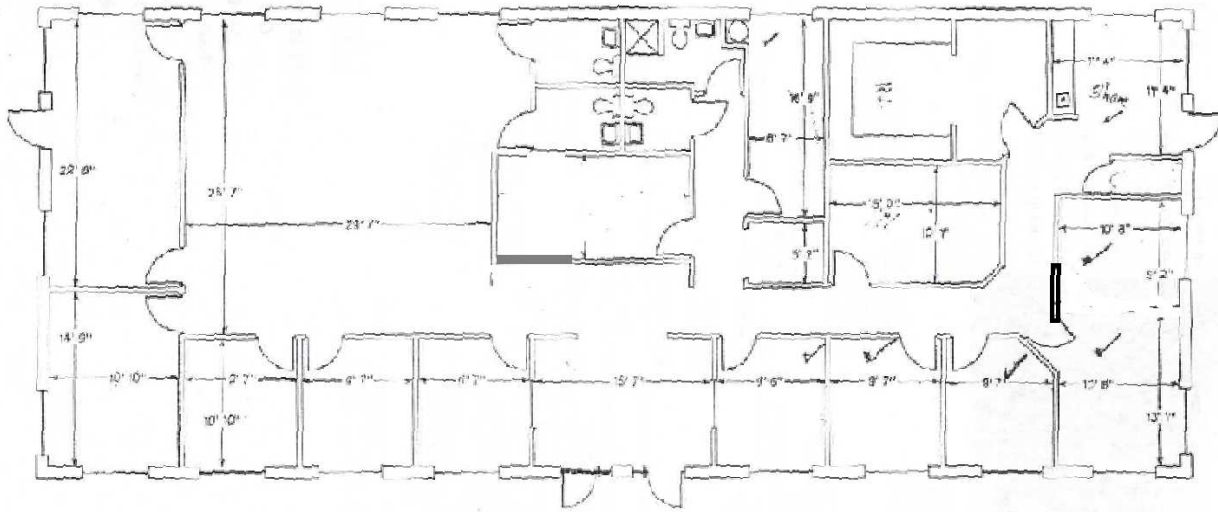
Data presented on this flyer is secured from reliable sources and while every effort is made to obtain accuracy, it is not guaranteed as errors and omissions may occur.

John Stipp – Office Properties

8508 Park Road #131, Charlotte, NC 28210

(704) 540-1260

John@charlotteofficespace.com



6406 Bennington
3,977 Gross Square Feet